



2012 ULM Softball Game Notes

2012 Schedule

FEBRUARY	DATE	OPPONENT	TIME (CT)
	10	(1) SIU-EDWARDSVILLE	W, 7-6 (9)
		(1) IUPUI	L, 3-11 (5)
	11	(1) NORTHWESTERN STATE	W, 10-0 (6)
		(1) SOUTHEAST MISSOURI	L, 4-8
	12	(1) GRAMBLING STATE	W, 12-3 (5)
	18	(2) McNeese State	W, 6-2
		(2) No. 17 Houston	L, 0-9 (5)
	19	(2) McNeese State	L, 0-2
		(2) No. 17 Houston	L, 0-13 (5)
	22	at Samford	W, 7-6 (8)
	25	(3) Virginia Tech	W, 2-1 (8)
		(3) Charleston	W, 5-4
		(3) Wagner	W, 6-2
	26	(3) Lipscomb	L, 0-2
MARCH			
	3	(4) Northwestern State	L, 1-3
		(4) Southern	W, 9-0 (5)
	4	(4) Northwestern State	W, 8-3
		(4) Southern	W, 8-2
	7	STEPHEN F. AUSTIN	W, 5-4 (8)
	10	*at South Alabama (DH)	L, 1-2 (9)
			L, 2-7
	11	*at South Alabama	L, 1-9 (6)
	14	*TROY (DH)	L, 3-4
			W, 2-1 (8)
	15	*TROY	W, 5-3
	24	*at Middle Tennessee (DH)	L, 0-4
			L, 4-6
	25	*at Middle Tennessee	W, 8-2
	28	at Nicholls State	W, 7-4
APRIL			
	6	*at FIU (DH)	L, 0-8 (5)
			L, 5-8
	7	*at FIU	L, 0-4
	11	at Central Arkansas	5 p.m.
	12	at Memphis	6 p.m.
	14	*NORTH TEXAS (DH)	2 P.M.
	15	*NORTH TEXAS	1 P.M.
	18	JACKSON STATE	6 P.M.
	19	Stephen F. Austin	4:30 p.m.
	21	*WESTERN KENTUCKY (DH)	2 P.M.
	22	*WESTERN KENTUCKY	12 P.M.
	24	*FLORIDA ATLANTIC (DH)	5 P.M.
	25	*FLORIDA ATLANTIC	4 P.M.
MAY			
	5	*at UL-Lafayette (DH)	1 p.m.
	6	*at UL-Lafayette	12 p.m.
	9	(5) Sun Belt Tournament	TBA
	10	(5) Sun Belt Tournament	TBA
	11	(5) Sun Belt Tournament	TBA
	12	(5) Sun Belt Tournament	TBA
	18	NCAA Regionals	TBA
	19	NCAA Regionals	TBA
	20	NCAA Regionals	TBA
	25	NCAA Super Regional	TBA
	26	NCAA Super Regional	TBA
	27	NCAA Super Regional	TBA
	31	College World Series	TBA
JUNE			
	1-6	College World Series	TBA

Home games in BOLD CAPS

*Sun Belt Conference Match
(DH) - Double Header

Tournament Legend

- (1) ULM Mardi Gras Classic (Monroe, La.)
- (2) Houston Hilton Plaza Invitational (Houston, Texas)
- (3) College of Charleston Cougar Classic (Charleston, S.C.)
- (4) Northwestern State Demon Invitational (Natchitoches, La.)
- (5) Sun Belt Tournament (Boca Raton, Fla.)



ULM WARHAWKS

2012 Record..... 16-16
Sun Belt Record..... 3-9
Last Week..... 0-3

All-Time vs. Central Arkansas1-2
All-Time vs. MemphisFirst Meeting
All-Time vs. North Texas16-17

Last time vs. Central Arkansas W, 2-1
Last time vs. MemphisFirst Meeting
Last time vs. North Texas L, 2-1



Game 33 • Central Arkansas Sugar Bears Wednesday, Apr. 11 • 5 p.m.

2012 Record.....3-6
Southland Record.....0-0
Last Week.....3-1



Game 34 • Memphis Tigers Thursday, Apr. 12 • 6 p.m.

2012 Record.....3-12
C-USA Record.....0-0
Last Week.....1-4



Games 35-37 • North Texas Mean Green Saturday, Apr. 14 • 2 p.m. (DH) Sunday, Apr. 15 • 1:00 p.m.

2012 Record.....2-6
Sun Belt Record.....0-0
Last Week.....1-1

WEEK PREVIEW:

ULM continues a busy stretch of games this week, beginning with back-to-back contests on the road. The Warhawks face Central Arkansas Wednesday at 5 p.m. and Memphis Thursday at 6 p.m. before returning home for a weekend Sun Belt Conference series against North Texas Saturday and Sunday.

ULM LAST TIME OUT:

The Warhawks experienced their third rainout this season, which forced the cancellation of their game against McNeese State Tuesday. It was a precursor for a tumultuous weekend for ULM, which suffered a sweep at the hands of conference foe FIU, who is second in league standings.

A LOOK AT CENTRAL ARKANSAS:

The Sugar Bears have compiled a 27-17 overall record playing a competitive schedule, which includes two wins over Louisiana Tech and a 6-5 victory over Southeastern Conference member Ole Miss. Central Arkansas is on a four game skid heading into Wednesday, however, having dropped two Southland Conference doubleheaders to UTSA and Texas State. ULM has squared off with them just three times and trails 1-2.

A LOOK AT MEMPHIS:

The Tigers have had an opposite season from the Sugar Bears to sit 12-29 overall, which included an eight game losing streak at one point. Last week they dropped a series to Conference USA opponent Tulsa, but took the final game 7-6. ULM and Memphis will battle for the first win between the two programs all-time.

A LOOK AT NORTH TEXAS:

The Mean Green are in the middle of the pack of the Sun Belt standings, sitting fourth after coming back from a first game loss to take the series from Florida Atlantic. North Texas is 17-18-1 this year and 8-6 in the league, but have won just one game in 12 road contests this season. ULM dropped the series against North Texas in Denton, Texas, last year to barely trail all-time 16-17.

NEXT WEEK:

The Warhawks host Jackson State Wednesday at 6 p.m. before hitting the road to make-up their game that was rained out a couple of weeks ago against Stephen F. Austin Thursday at 4:30 p.m. Western Kentucky comes into Monroe two days later for ULM's second home weekend Sun Belt series in a row.

PROJECTED LINEUP

Pos.	No.	Name	Yr.	B/T	AVG	R	RBI	HR	SB-A	Notes
C	13	Roxy Cassel	Sr.	R/R	.241	12	11	1	3-4	21 BB, 89 career RBIs
1B	16	Janel Salanoa	Jr.	R/R	.337	15	20	3	9-10	1 3B, 6 2B, 49 TB
2B	7	Miyuki Navarrete	So.	R/R	.261	21	13	2	17-19	6 2B, 4 SH, .391 slg %
3B	22	Alexis Cacioppo	Fr.	R/R	.326	20	20	4	5-7	52B, 47 TB, .511 slg %
SS	21	Kayla Boening	Fr.	L/R	.200	10	9	0	9-15	2 3B, 14 BB
LF	3	Elena DiMattia	Jr.	L/R	.231	9	3	0	5-7	6 BB, 4 SH
CF	4	Mackenzie Miller	Fr.	R/R	.185	12	9	0	8-8	4 2B, 19 TB
RF	18	Haley McCall	Jr.	R/R	.207	13	12	1	10-11	8 2B, 1 3B, 31 TB
DP	10	Charlotte Pastor	Jr.	L/R	.230	8	5	0	4-4	1 2B, 18 TB

Starting Pitchers

Pos.	No.	Name	Yr.	W-L	CG	IP	ERA	SO	ER	Notes
RHP	12	Stephanie Routzon	So.	3-9	3	60.1	4.18	21	36	13 GS, 14 APP, 23 BB
RHP	9	Samantha Hamby	Jr.	4-3	3	50.2	3.32	37	24	11 GS, 45 H, 2 SHO
RHP	14	Haylie Wilson	Fr.	9-2	6	78.0	3.95	40	44	8 GS, 21 APP, 21 BB

Media Relations

ULM MEDIA RELATIONS CONTACT

Rachel Williams
office: (318) 342-5461
cell: (386) 852-0349
fax: (318) 342-5464
email: willliart@warhawks.ulm.edu

POSTGAME INTERVIEWS -- will be conducted at a designated location following a NCAA mandated 10-minute cooling-off period. ULM head coach Rosemary Holloway-Hill and selected players will be made available for interviews upon request. Media requests (at home) and for both ULM and opposing coaches and players should be made to the ULM softball SID. Opponent requests will be forwarded to the visiting SID. The Warhawk softball locker room is closed to the media.

INTERVIEWS DURING THE WEEK -- All interview requests must be arranged through Rachel Williams in the ULM Media Relations Office. Please contact Rachel Williams to arrange interviews during the week. Practice is closed, but arrangements can be made in advance if you are planning on shooting B-roll footage. Coach Holloway-Hill and ULM student-athletes are available for interviews on non-game days following practice or through special arrangements with Rachel Williams.

ULMWARHAWKS.COM -- All the latest scores, statistics and player information is available by accessing the softball section at ulmwarhawks.com. Game stories, previews, statistics, game notes and advisories will be sent to interested media via e-mail. Live stats for ULM fans are also available online at ulmwarhawks.com.

ADDITIONAL SERVICES -- In an effort to serve members of the media, the ULM Media Relations Office will, within reason and to the best of its ability, service all requests. Photographs of student-athletes or coaches will be made available for print or online media outlets unable to shoot a Warhawk basketball game. Photo credits must always read "Photograph courtesy of ulmwarhawks.com."

RADIO -- All radio stations wishing to broadcast the ULM Softball Complex should contact the ULM Media Relations Office at least one week prior to the event. Space will be provided for the official radio station of the visiting team; others will be accommodated as space permits. Phone lines must be arranged for all stations in advance.

GAME NOTES -- Media members can receive the Warhawk Softball game notes via e-mail by contacting Rachel Williams.

WE ARE THE ULM WARHAWKS -- We are ULM. In all references to Warhawk athletics, please use the acronym 'ULM'. The only other acceptable version is the full name of the institution, the University of Louisiana at Monroe. Any other reference, including Louisiana-Monroe, La.-Monroe, UL-Monroe, LMU, or simply Monroe are inaccurate. Refer to all ULM athletic teams as Warhawks including all women's teams. Lady Warhawks or Lady Hawks is not acceptable. Individual players may be referred to as a Warhawk.

20

Number of runs and RBIs freshman Alexis Cacioppo has this season, which is 1st and 2nd for ULM, respectively

33rd

Where Miyuki Navarrete ranks in the nation in stolen bases (0.53 per game)

75

ULM's Sun Belt-leading amount of stolen bases this season

5th

ULM remains one of the fastest teams in the nation, averaging 2.34 stolen bases per game to rank 5th in the NCAA

4

Consecutive weeks the Warhawks have ranked in the top-5 in the nation in stolen bases

8-8

Haley McCall's perfect mark in stolen bases this season. Charlotte Pastor is the only other Warhawk who is perfect with 4-4

29th

ULM jumped 24 spots nationally in double plays per game after ranking 53rd last week, and averages 0.41 per game

4

How many leadoff home runs ULM has hit this season, which includes Miyuki Navarrete's against FIU on the first pitch of the game

0-0

The count when both of ULM's home runs were hit this weekend against FIU

.400

Katie Girardi's batting average in just five at bats and three appearances this season

3

Categories ULM ranks in the top 100 nationally, including stolen bases (5th) double plays per game (29th) and triples per game (72nd)

21

Roxy Cassel's team-leading number of walks this season, ranking seventh in the Sun Belt

2012 Quick Facts

UNIVERSITY

Location	Monroe, La.
Founded	1931
Enrollment	8,858
Nickname	Warhawks
Colors	Maroon and Gold
Mascot	Ace
Conference	Sun Belt
President	Dr. Nick J. Bruno
AD	Bobby Staub
SWA	Tasha Tisher
Athletics Phone	(318) 342-3ULM
Web Site	ulmwarhawks.com

COACHING STAFF

Head Coach	Rosemary Holloway-Hill
Alma Mater	Oral Roberts, '77
Record at ULM (Seasons)	694-881-3 (28)
Associate Head Coach	Sara Vogt
Alma Mater	Indiana, '03
Years at ULM	Fourth Season
Graduate Assistant	Paige Cassady
Alma Mater	FIU, '10
Years at ULM	Second Season

TEAM INFORMATION

2011 Record	27-28
2011 Sun Belt Finish	10-14 (6th)
2011 Sun Belt Tournament Finish	First round
2011 Postseason	didn't qualify
Letterwinners Returning/Lost	8/10
Starters Returning/Lost	4/5
Pitchers Returning/Lost	2/2
Newcomers	8

FACILITY INFORMATION

Venue	ULM Softball Complex
Capacity	500
Dimensions (L-R)	200-210-220-210-200
Press Box Number	n/a

PROGRAM HISTORY

All-Time Record (Percentage)	856-1044-5 (.449)
NCAA Tournament Appearances	1
Years	1997
NCAA Tournament Record	1-2

SUN BELT HISTORY

All-Time SBC Record (Percentage)	44-81 (.352)
Sun Belt Tournament Appearances	4

6

Number of victories away from head coach Rosemary Holloway-Hill's **700th** win at ULM

2012 Sun Belt Conference Standings (as of 4/10/12)

Team	Conference				Overall				Streak
	W	L	T	Pct.	W	L	T	Pct.	
UL-Lafayette	8	1	-	.889	33	1	-	.971	W5
FIU	7	3	-	.5700	19	16	-	.543	W3
South Alabama	11	5	-	.688	24	12	-	.667	L3
North Texas	8	6	1	.567	17	18	1	.486	W2
Western Kentucky	6	5	1	.542	23	15	1	.603	W2
Troy	5	8	-	.385	23	14	-	.622	L2
ULM	3	9	-	.250	16	16	-	.500	L3
Middle Tennessee	2	7	-	.222	12	18	-	.400	L3
Florida Atlantic	2	8	-	.200	12	27	-	.308	L2

CASSEL IN RECORD BOOKS

Roxy Cassel's 4 RBIs in the Mardi Gras Classic put her over the edge in ULM program history. Since then, the senior has totaled 89 RBIs for her career for a solo fifth place after entering 2012 tied in fifth with 79. She needs 32 more to overtake phenom Brianna Love in fourth place.

ACC WIN

ULM had a huge victory at the College of Charleston Cougar Classic Feb. 25 when it took down Virginia Tech 2-1 in eight innings. The win marked the first over an Atlantic Coast Conference member in the history of the program, ending a 12-game losing streak to ACC schools. The Warhawks entered the contest with a 0-12-1 record all-time against ACC opponents, including a 0-1 record against the Hokies.

CASSEL IN RECORD BOOKS

Roxy Cassel's 4 RBIs in the Mardi Gras Classic put her over the edge in ULM program history. Since then, the senior has totaled 89 RBIs for her career for a solo fifth place after entering 2012 tied in fifth with 79. She needs 32 more to overtake phenom Brianna Love in fourth place.

SALANOA PRESEASON SELECTION

ULM's Janel Salanoa was picked as a preseason selection for the College Sports Madness Sun Belt Preason Team, the first honor of her career. Salanoa is the strongest returner for the Warhawks this season after averaging .321 at bat with 11 doubles, seven home runs and a .537 slugging percentage. She ranked eighth in the nation with four sacrifice flies, setting a ULM single-season record while striking out just five times in 168 at bats to rank 17th nationally.

RETURNING OFFENSIVE POWER

The 2011 ULM squad was one the highest offensive outputting squads in program history, and set a single-season record for runs with 264. The Warhawks return three of the most dominant batters, including Janel Salanoa with the top returning batting average of .321. Salanoa and Miyuki Navarrete each had 33 runs and Roxy Cassel had 25, accounting for more than a third of the team's runs.

NATIONAL CHAMPIONS

From Bengals to Warhawks, ULM welcomed two members of the NJCAA Division II National Championship winning team LSU-Eunice. Third baseman Haley McCall and outfielder Karli Wainwright were both key to the Bengals' success, as McCall was named the MVP of the national championship game and a NJCAA All-American while Wainwright was a first team all-region and all-conference pick.

ULM PICKED EIGHTH IN SBC

The ULM softball team was picked to finish eighth in the 2012 Sun Belt Conference Pre-season Poll. The Warhawks received 26 votes from the league's nine head coaches. Defending champion UL-Lafayette was selected to repeat their championship after collecting 80 points an-

dall but one first place vote.

2011 RECAP

The Warhawks finished 2011 with its winnigest season since 2006, going 27-28 overall and 10-14 in SBC play. ULM's 27 wins are the most since it went 27-30 in 2006, the last season it was a member of the Southland Conference. It also marked the fourth 20-win season for the Warhawks and the most league wins since joining the Sun Belt in 2007.

WARHAWKS SIGN FIVE FOR 2013

Head coach Rosemary Holloway-Hill landed five impressive recruits during the Early Signing Period for the 2013 season. All have a teammate joining them, as three hail from the 2011 Class 5A Louisiana State Championship team Hanville HS in Boutte, La., and two come from defending national champions The Woodlands in The Woodlands, Texas.

Amy Barre landed on the all-district team all three seasons including a first team distinction in 2011 playing for Hahnville HS. She was named an all-state honorable mention this past year after collecting a team-best 34 RBIs with a .403 batting average. In 102 at-bats she only struck out four times, which also earned her a Louisiana Sports Writer's Association all-state honorable mention nod.

Faith Bohack was named to the second team all-state last season and made the all-state tournament team after The Woodlands won the state championship. She had a .425 batting average in 2011 and collected seven home runs, five triples, 12 doubles and 62 runs while driving in 57 runners. She is also a three-time first team all-district selection.

Courtney Dutreix earned all-state accolades the past two seasons, including a first team pick for both the Louisiana Sports Writer's Association and the Louisiana Softball Coaches Association in 2011. She has also been named to the all-metro and all-district teams for three years running and holds the school record for most hits in a single season.

Hope Mair earned a first team all-district distinction for the past three seasons, and in 2011 earned the honor playing in right field. The native of Des Allemande, La., ended her junior season with 22 runs, 22 RBIs, two homeruns, a .351 batting average and a .526 slugging percentage.

Kayla Prater is a two-time all-state selection after being named to the second team in 2011 an honorable mention in 2010. She is also a back-to-back all-district pick her sophomore and junior campaigns including landing on the first team last year. The catcher collected 39 hits and 26 runs in 2011 along with 18 RBIs in 119 at-bats for a .328 batting average.

2012 Sun Belt Rankings

(as of 4/10/12)

OFFENSIVE	RANK
Stolen Bases (75)	1st
Runs (131)	7th
Triples (6)	T5th
Walks (89)	6th
Doubles (37)	7th
Batting Average (.256)	8th
Hits (210)	9th
RBIs (105)	8th
Home Runs (12)	8th

PITCHING/DEFENSIVE	RANK
ERA (4.00)	7th
Opposing Batting Average (.295)	8th
Hits (245)	6th
Runs (143)	6th
Earned Runs (117)	7th
Strikeouts (110)	8th
Walks (96)	6th
Fielding Percentage (.960)	5th
Errors (36)	6th

INDIVIDUALS	RANK
Karli Wainwright	
Triples (2)	T6th

Kayla Boening	
Steal Attempts (15)	4th
Triples (2)	T6th

Roxy Cassel	
Walks (21)	7th

Miyuki Navarrete	
Stolen Bases (17)	1st
Steal Attempts (19)	1st
Sac Bunts (4)	T10th

Haley McCall	
Stolen Bases (10)	T8th
Steal Attempts (11)	T10th

Elena DiMattia	
Sac Bunts (4)	T10th

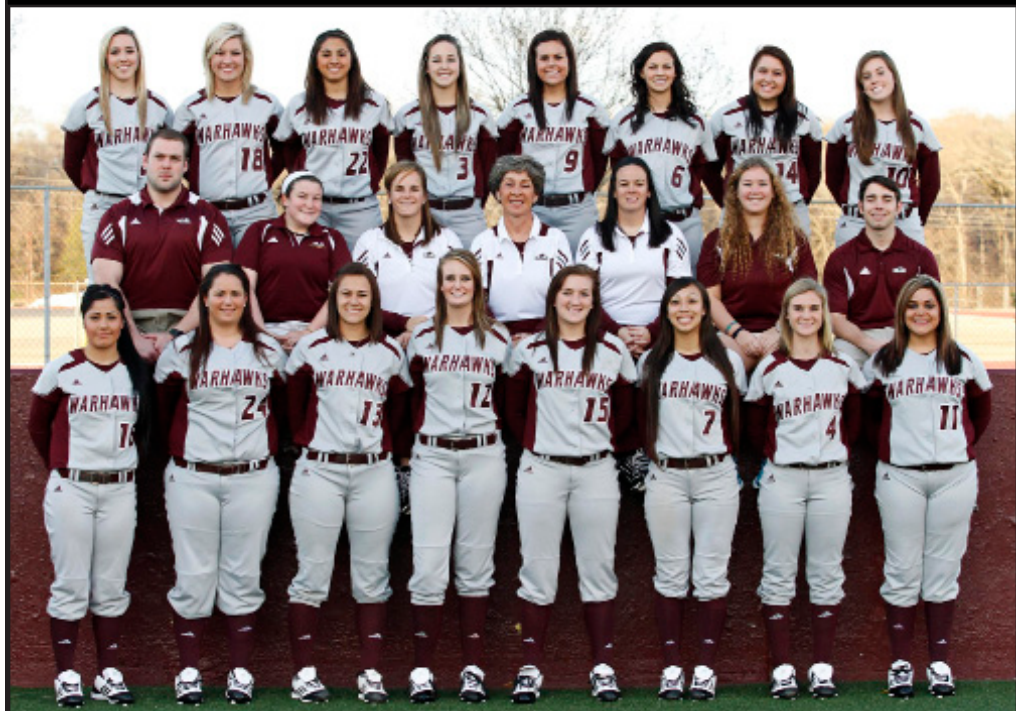
Stephanie Routzon	
Losses (9)	T2nd
Home Runs Allowed (4)	T6th
Walks Allowed (23)	T8th
Games Started (13)	T10th

Samantha Hamby	
Hits Allowed (45)	4th
Runs Allowed (29)	3rd
Doubles Allowed (9)	T7th
Triples Allowed (1)	T4th
Home Runs Allowed (3)	T2nd
Opposing Batting Average (.250)	9th
Batters Struck Out Looking (20)	T9th

Haylie Wilson	
Games Finished (11)	1st
Games in Relief (13)	1st
Triples Allowed (1)	T4th
Appearances (21)	T6th
Wins (9)	T7th
Walks Allowed (21)	T6th

Jessica Chastka	
Games Finished (6)	T6th
Games in Relief (9)	4th

2012 ULM Softball Team



BY CLASS

Seniors..... Roxy Cassel
 Jessica Chastka
 Katie Girardi
 Juniors Elena DiMattia
 Samantha Hamby
 Haley McCall
 Charlotte Pastor
 Janel Salanoa
 Karli Wainwright
 Sophomores..... Miyuki Navarrete
 Stephanie Routzon
 Freshmen..... Kayla Boening
 Alexis Cacioppo
 Mackenzie Miller
 Haylie Wilson

BY POSITION

C..... Roxy Cassel
 Katie Girardi
 IF..... Alexis Cacioppo
 Katie Girardi
 Haley McCall
 Miyuki Navarrete
 Charlotte Pastor
 Stephanie Routzon
 Janel Salanoa
 OF..... Elena DiMattia
 Karli Wainwright
 P..... Jessica Chastka
 Samantha Hamby
 Stephanie Routzon
 Haylie Wilson
 UT..... Kayla Boening
 Mackenzie Miller
 DP..... Roxy Cassel
 Janel Salanoa

BY STATE

California Alexis Cacioppo
 Miyuki Navarrete
 Janel Salanoa
 Colorado Mackenzie Miller
 Stephanie Routzon
 Florida..... Katie Girardi
 Haylie Wilson
 Louisiana..... Elena DiMattia
 Samantha Hamby
 Haley McCall
 Charlotte Pastor
 Karli Wainwright
 Texas..... Kayla Boening
 Roxy Cassel
 Jessica Chastka

No.	Player	Pos.	B/T	Ht.	Yr.	Hometown(Previous School)
3	Elena DiMattia	OF	L/R	5-4	Jr.	Sunset, La. (Beau Chene HS)
4	Mackenzie Miller	UT	R/R	5-6	Fr.	Evergreen, Colo. (Conifer HS)
6	Karli Wainwright	OF	L/R	5-4	Jr.	Lake Charles, La. (LSU-Eunice)
7	Miyuki Navarrete	IF	R/R	5-6	So.	San Jose, Calif. (Archbishop Mitty HS)
9	Samantha Hamby	P	R/R	5-7	Jr.	Monroe, La. (Central Alabama CC)
10	Charlotte Pastor	IF	L/R	5-3	Jr.	Metairie, La. (St. Mary's Dominican HS)
12	Stephanie Routzon	P/IF	R/R	6-0	So.	Wheat Ridge, Colo. (Wheat Ridge HS)
13	Roxy Cassel	C/DP	R/R	5-8	Sr.	Deer Park, Texas (Deer Park HS)
14	Haylie Wilson	P	R/R	5-3	Fr.	Middleburg, Fla. (The Bolles School)
15	Jessica Chastka	P	R/R	5-8	Sr.	College Station, Texas (A&M Consolidated HS)
16	Janel Salanoa	IF	R/R	5-5	Jr.	San Jose, Calif. (Evergreen Valley HS)
18	Haley McCall	IF	R/R	5-6	Jr.	Grand Chenier, La. (LSU-Eunice)
21	Kayla Boening	UT	L/R	5-4	Fr.	San Antonio, Texas (Poth HS)
22	Alexis Cacioppo	IF	R/R	5-5	Fr.	La Habra, Calif. (Sonora HS)
24	Katie Girardi	IF/C	R/R	5-8	Sr.	Pembroke Pines, Fla. (McArthur HS)

COACHING STAFF

Head Coach: Rosemary Holloway-Hill, 28th Season (Oral Roberts, '77)
 Assistant Coach: Sara Vogt, Fourth Season (Indiana, '03)
 Graduate Assistant Coach: Paige Cassady, Second Season (FIU, '10)

PRONUNCIATIONS

Kayla Boening..... BANE-ing
 Alexis **Cacioppo** cass-e-o-po
 Jessica **Chastka** chas-t-ka
 Elena **DiMattia** de-matt-e-ah

Miyuki Navarrete.....me-you-key na-va-rhet
 Stephanie **Routzon**..... ROUTE-zun
 Janel **Salanoa** sal-A-noah
 Sara **Vogt** vote

ULM's Record When...

OVERALL	16-16
NON-CONFERENCE	13-7
LOUISIANA TEAMS	7-2
SUN BELT	3-9
VS. TOP 25	0-2
DAY GAMES	12-13
NIGHT GAMES	4-3
HOME	6-2
AWAY	5-11
NEUTRAL	5-3
FEBRUARY	8-6
MARCH	8-7
APRIL	0-3
MAY	-
SUNDAY	4-5
MONDAY	-
TUESDAY	-
WEDNESDAY	4-1
THURSDAY	1-0
FRIDAY	1-3
SATURDAY	6-7
SHUTOUTS	2-7
RUN-RULE GAMES	3-4
EXTRA-INNING GAMES	5-1
ONE-RUN GAMES	6-2
TWO-RUN GAMES	1-4
FIVE-RUN + GAMES	6-6
SCORED FIRST	9-4
OPPONENT SCORED FIRST	7-12
SCORED IN 1st INNING	9-4
OPPONENT SCORED IN 1st INNING	5-7
SCORED 0-2 RUNS	2-11
SCORED 3-5 RUNS	3-5
SCORED 6-9 RUNS	9-0
SCORED 10 + RUNS	2-0
OPPONENT SCORED 0-2 RUNS	8-3
OPPONENT SCORED 3-5 RUNS	6-4
OPPONENT SCORED 6-9 RUNS	2-7
OPPONENT SCORED 10 + RUNS	0-2
OUT-HIT OPPONENT	9-1
OUT-HIT BY OPPONENT	5-14
HITS ARE TIED	2-1
MADE 0 ERRORS	4-4
MADE 1 ERRORS	10-8
MADE 2+ ERRORS	2-4
OPPONENT MADE 0 ERRORS	3-8
OPPONENT MADE 1 ERROR	4-4
OPPONENT MADE 2+ ERRORS	9-4
HIT 0 HOME RUNS	9-13
HIT 1 HOME RUN	6-2
HIT 2+ HOME RUNS	1-1
AFTER 4 LEADING	10-0
AFTER 4 TRAILING	2-14
AFTER 4 TIED	4-2
AFTER 5 LEADING	10-0
AFTER 5 TRAILING	1-12
AFTER 5 TIED	3-0
AFTER 6 LEADING	10-0
AFTER 6 TRAILING	0-10
AFTER 6 TIED	3-1

Head Coach Rosemary Holloway-Hill



With 27 years in the dugout for the ULM softball team, Rosemary Holloway-Hill enters the 2012 season as the longest tenured of all the current Warhawks head coaches. The dean of the ULM coaching family, Holloway-Hill enters her 28th season as softball skipper with more victories than any head coach in any sport in Warhawks history.

At the start of the 2012 season Holloway-Hill has led the Warhawks to 680 wins, three conference championships and two postseason appearances. Her 680 victories rank 33rd among all NCAA active coaches as well as 52nd all-time as a Division I head coach. In the fall of 2009 she was honored at the National Fastpitch Coaches Association after reaching her 700th career coaching victory, which now totals 760 wins over 33 years as a head coach.

Holloway-Hill has coached many of the softball program's most successful players, including ULM's only All-American Sarah Dawson. Dawson owns every career pitching record at ULM including winning percentage (.681), wins (120) and ERA (0.69). Holloway-Hill also guided two of the program's most accomplished hitters, Lori Tande-Bruscato and three-time NFCA All-South Region selection Brianna Love. In 2011 Love ended her career by breaking many records previously held by Tande-Bruscato, including single-season home runs (16), total home runs (45), runs scored (165) and career batting average (.360). Tande-Bruscato currently holds the all-time records for doubles (49), hits (242), total bases (501) and most at-bats (706).

In 2011 Holloway-Hill led ULM to its fourth-straight appearance at the Sun Belt Conference Tournament after finishing sixth place in the regular season, the highest result since joining the league in 2007. The team's 27-28 record is the best since the Warhawks' final season in the Southland Conference in 2006 and picked up a program-best 10 Sun Belt wins. She has continued to push the Warhawks to their full potential with a competitive schedule in 2011 that included five ranked teams and softball powerhouses Tennessee and Oklahoma.

In addition to producing talented and winning teams on the diamond, Holloway-Hill has stressed that her student athletes enjoy a balanced collegiate experience. Community service and academics have been fundamental values within the Warhawks' softball program thanks to the emphasis Holloway-Hill has placed on them. Since becoming head coach, 25 players have been named National Fastpitch Coaches Association All-America Scholar Athletes. The Warhawks landed in the top-50 in the nation in cumulative GPA in 2010 and 2011 including 47th with a 3.279 average last season, which ranked second in the Sun Belt and was the top program in the state of Louisiana.

The longtime mentor of the ULM softball program, Holloway-Hill has constantly challenged her teams by playing some of the top talent in the nation. The 2007 season brought new challenges as the Warhawks played their first season in the highly competitive Sun Belt Conference. Despite finishing ninth in the league in its inaugural campaign, ULM once again finished with a winning record at home and tallied victories over the league's top three teams.

As good as ULM has been in the classroom under Holloway-Hill, they have been even better on the field. In addition to having the most wins in ULM history, her 238 victories from the program's days in the Southland Conference were the most by any school in that league. Holloway-Hill posted her 200th-career win against an SLC squad in a 5-2 decision over McNeese State on April 21, 2001.

Following the 2004 season, the NFCA recognized ULM's achievements on the softball field when its All-Time Top 50 poll was released. ULM was ranked No. 43 amongst the more than 250 Division I softball programs in the nation, the highest in the Southland Conference and the third highest amongst all the schools in the state of Louisiana. The top 50 ranking was compiled using weekly USA Today/NFCA polls from 1995 through 2003.

Holloway-Hill came to what was then Northeast Louisiana University in 1984 as an assistant coach to Mary Jo Murray before becoming the program's fifth head coach the following season. She promptly guided the Warhawks to the Southland Conference Tournament championship - the university's first - in her first season as head coach in 1985. Her 1986 squad also claimed the tournament title.

In 1992, ULM finished in second in the conference race but the team's record against a strong schedule - a trademark of a Holloway-Hill team - earned it the chance to compete in the National Invitational Championships in Macomb, Ill., a tournament for leading teams which did not make the NCAA playoffs. ULM won the tournament with a 6-1 record, defeating Ivy League champion Princeton in the finals, 3-0.

Holloway-Hill's greatest team came five years later. The 1997 edition, led by All-American pitcher Sarah Dawson, won the Southland Conference championship, posted a 47-12 record, was ranked No. 18 in the nation, and competed in the NCAA tournament before being defeated by eventual national runner-up UCLA.

Following the 1997 season, Holloway-Hill garnered numerous coaching honors. She was named Southland Conference Coach of the Year by her peers in the coaching ranks, Louisiana Coach of the Year by the Louisiana Sports Writers Association, and South Region Coach of the Year by the NFCA.

In addition to coaching at ULM, Holloway-Hill has coached Athletes in Action teams. She was an assistant on a 1986 AIA team that toured Western Europe and was head coach of a 1987 squad that toured South America. In 1990, she traveled to Spain as head coach of an AIA team and conducted clinics in Barcelona.

A native of Skiatook, Okla., Holloway-Hill was a star athlete at Northeastern Oklahoma A&M Junior College, becoming the first woman to letter in four sports at the school - basketball, volleyball, tennis and cross country. While there she lettered on the men's cross country team.

Holloway-Hill earned a bachelor's degree in physical education at Oral Roberts in 1977. She was also a member of the first USA korfbal (a Dutch form of basketball) team and conducted clinics and tournaments in Holland her senior year at ORU.

After graduation, Holloway-Hill became coach at Cloud County Community College in Concordia, Kan., and helped turn around its softball program. While at Cloud County, Holloway-Hill's teams captured three state championships in four years.

In addition to being the softball head coach, Holloway-Hill also coached volleyball during the beginning of her ULM career from 1984-93. With 159 career victories on the volleyball court, Holloway-Hill is that program's all-time winningest coach and has been responsible for all five of the school's winning seasons. The ULM volleyball program enjoyed its best season under Holloway-Hill's direction, finishing third in the Southland Conference at 30-25 the same season that the softball team advanced to the league's tournament championship game.

HOME RUNS THIS SEASON

No.	Date	Opp.	Batter	Inning	ROB	Count	Note
12.	04/06	at FIU	Girardi (1)	6th	2	0-0	
11.	04/06	at FIU	Navarrete (2)	1st	0	0-0	LO
10.	03/28	at Middle Tennessee	Salanoa (4)	5th	1	-	
9.	03/25	vs. Troy	McCall (1)	6th	2	2-2	
8.	03/10	at South Alabama	Cacioppo (4)	1st	1	2-1	In Park
7.	03/10	at South Alabama	Salanoa (2)	6th	0	3-1	
6.	03/04	vs. Southern	Navarrete (1)	6th	0	1-0	
5.	02/25	vs. Wagner	Salanoa (1)	5th	1	1-1	
4.	02/25	vs. Wagner	Cacioppo (3)	4th	0	0-0	LO
3.	02/22	at Samford	Cacioppo (2)	3rd	0	0-1	
2.	02/12	Grambling State	Cacioppo (1)	4th	0	3-2	LO
1.	02/10	SIU-Edwardsville	Cassel (1)	7th	1	1-2	

2012 Results

DATE	OPPONENT	RESULT	ULM R/H/E	OPP R/H/E	RECORD	SUN BELT	PITCHER OF RECORD	ATT	TIME
Feb. 10	(1) SIU-Edwardsville	W, 7-6 (9)	7-8-4	6-9-2	1-0	0-0	Hamby (W, 1-0)	358	2:25
Feb. 10	(1) IUPUI	L, 3-11 (5)	3-3-0	11-10-0	1-1	0-0	Wilson (L, 0-1)	358	2:00
Feb. 11	(1) Northwestern State	W, 10-0 (6)	10-11-1	0-2-0	2-1	0-0	Hamby (W, 2-0)	303	2:19
Feb. 11	(1) Southeast Missouri State	L, 4-8	4-6-4	8-8-2	2-2	0-0	Routzon (L, 0-1)	303	1:58
Feb. 12	(1) Grambling State	W, 12-3 (5)	12-15-1	3-8-5	3-2	0-0	Wilson (W, 1-1)	386	1:58
Feb. 18	(2) vs. McNeese State	W, 6-2	6-5-1	2-7-2	4-2	0-0	Routzon (W, 1-1)	287	1:57
Feb. 18	(2) at No. 17 Houston	L, 0-9 (5)	0-0-1	9-12-1	4-3	0-0	Hamby (L, 2-1)	486	1:38
Feb. 19	(2) vs. McNeese State	L, 0-2	0-2-1	2-4-3	4-4	0-0	Hamby (L, 2-2)	339	1:50
Feb. 19	(2) at No. 17 Houston	L, 0-13 (5)	0-4-3	13-13-0	4-5	0-0	Routzon (L, 1-2)	521	1:34
Feb. 22	at Samford	W, 7-6 (8)	7-12-1	6-9-4	5-5	0-0	Wilson (W, 2-1)	114	2:20
Feb. 25	(3) vs. Virginia Tech	W, 2-1 (8)	2-1-2	1-7-0	6-5	0-0	Routzon (W, 2-2)	89	1:54
Feb. 25	(3) at Charleston	W, 5-4	5-6-1	4-8-2	7-5	0-0	Wilson (W, 3-1)	210	2:08
Feb. 25	(3) vs. Wagner	W, 6-2	6-7-0	2-7-1	8-5	0-0	Wilson (W, 4-1)	88	1:45
Feb. 26	(3) vs. Lipscomb	L, 0-2	0-3-0	2-7-0	8-6	0-0	Routzon (L, 2-3)	78	1:50
Mar. 3	(4) at Northwestern State	L, 1-3	1-4-1	3-9-3	8-7	0-0	Routzon (L, 2-4)	127	1:52
Mar. 3	(4) vs. Southern	W, 9-0 (5)	9-11-0	0-4-4	9-7	0-0	Hamby (W, 3-2)	87	1:06
Mar. 4	(4) at Northwestern State	W, 8-3	8-8-1	3-8-1	10-7	0-0	Wilson (W, 5-1)	146	2:02
Mar. 4	(4) vs. Southern	W, 8-2	8-12-1	2-4-2	11-7	0-0	Routzon (W, 3-4)	131	1:36
Mar. 7	Stephen F. Austin	W, 5-4 (8)	5-9-0	4-6-1	12-7	0-0	Wilson (W, 6-1)	130	2:36
Mar. 10	*at South Alabama	L, 2-1 (9)	1-8-1	2-7-1	12-8	0-1	Routzon (L, 3-5)	354	2:42
Mar. 10	*at South Alabama	L, 2-7	2-5-1	7-9-0	12-9	0-2	Wilson (L, 6-2)	326	1:47
Mar. 11	*at South Alabama	L, 1-9 (6)	1-4-0	9-12-1	12-10	0-3	Routzon (L, 3-6)	355	1:55
Mar. 14	*Troy	L, 3-4	3-8-3	4-8-0	12-11	0-4	Routzon (L, 3-7)	251	2:11
Mar. 14	*Troy	W, 2-1 (8)	2-9-0	1-3-1	13-11	1-4	Hamby (W, 4-2)	243	1:59
Mar. 15	*Troy	W, 5-3	5-5-1	3-2-0	14-11	2-4	Wilson (W, 7-2)	176	2:01
Mar. 24	*at Middle Tennessee	L, 0-4	0-6-1	4-8-0	14-12	2-5	Routzon (L, 3-8)	183	1:47
Mar. 25	*at Middle Tennessee	L, 4-6	4-5-1	6-11-2	14-13	2-6	Chastka (L, 0-1)	193	1:54
Mar. 25	*at Middle Tennessee	W, 8-2	8-13-1	2-7-3	15-13	3-6	Wilson (W, 8-2)	189	1:48
Mar. 28	at Nicholls State	W, 7-4	7-8-1	4-11-3	16-13	3-6	Wilson (W, 9-2)	113	2:04
Apr. 6	*at FIU	L, 0-8 (5)	0-1-1	8-10-0	16-14	3-7	Routzon (L, 3-9)	265	1:26
Apr. 6	*at FIU	L, 5-8	5-8-0	8-9-0	16-15	3-8	Chastka (L, 0-2)	265	2:22
Apr. 7	*at FIU	L, 0-4	0-3-2	4-6-1	16-16	3-9	Hamby (L, 4-3)	239	1:48

home games in bold

- (1) ULM Mardi Gras Classic (Monroe, La.)
- (2) Houston Hilton Plaza Invitational (Houston, Texas)
- (3) College of Charleston Cougar Classic (Charleston, S.C.)
- (4) NSU Lady Demon Classic

* Sun Belt Conference games

**2012 ULM Softball
Overall Statistics for ULM (as of Apr 10, 2012)
(All games Sorted by Batting avg)**

Record: 16-16 Home: 6-2 Away: 5-11 Neutral: 5-3 Sun Belt: 3-9

Player	avg	gp-gs	ab	r	h	2b	3b	hr	rbi	tb	slg%	bb	hp	so	gdp	ob%	sf	sh	sb-att	po	a	e	fld%
Girardi, Katie	.400	3-1	5	1	2	0	0	1	3	5	1.000	0	0	1	0	.400	0	0	0-0	0	0	0	.000
Wainwright, Karli	.388	15-14	49	10	19	1	2	0	1	24	.490	1	1	7	0	.412	0	0	5-8	9	0	1	.900
Salanoa, Janel	.337	32-31	95	15	32	6	1	3	20	49	.516	6	1	6	1	.379	1	0	9-10	188	18	2	.990
Cacioppo, Alexis	.326	32-32	92	20	30	5	0	4	20	47	.511	12	1	17	0	.410	0	3	5-7	46	66	5	.957
Navarrete, Miyuki	.261	32-32	92	21	24	6	0	2	13	36	.391	6	3	17	0	.324	1	4	17-19	86	54	8	.946
Cassel, Roxy	.241	32-32	79	12	19	5	0	1	11	27	.342	21	1	16	0	.406	0	2	3-4	117	19	1	.993
DiMattia, Elena	.231	30-22	65	9	15	0	0	0	3	15	.231	6	2	18	0	.315	0	4	5-7	24	2	2	.929
Pastor, Charlotte	.230	28-25	74	8	17	1	0	0	5	18	.243	5	1	15	0	.288	0	2	4-4	8	2	1	.909
McCall, Haley	.207	31-31	87	13	18	8	1	1	12	31	.356	6	0	21	0	.258	0	2	10-11	35	4	3	.929
Boening, Kayla	.200	32-32	90	10	18	0	2	0	9	22	.244	14	2	19	0	.321	0	0	9-15	40	43	8	.912
Miller, Mackenzie	.185	32-32	81	12	15	4	0	0	9	19	.235	10	1	26	0	.283	0	3	8-8	53	6	1	.983
Wilson, Haylie	.091	8-5	11	0	1	1	0	0	1	2	.182	2	0	4	0	.231	0	0	0-0	5	13	1	.947
Routzon, Stephanie	.000	1-1	0	0	0	0	0	0	0	0	.000	0	0	0	0	.000	0	0	0-0	1	13	2	.875
Totals	.256	32	820	131	210	37	6	12	107	295	.360	89	13	167	1	.338	2	20	75-93	614	254	36	.960
Opponents	.295	32	831	143	245	44	3	18	127	349	.420	96	13	110	1	.374	6	23	32-38	631	290	47	.951

LOB - Team (185), Opp (214). DPs turned - Team (13), Opp (7). Picked off - Cacioppo 1.

(All games Sorted by Earned run avg)

Player	era	w-l	app	gs	cg	sho	sv	ip	h	r	er	bb	so	2b	3b	hr	b/avg	wp	hp	bk	sfa	sha
Hamby, Samantha	3.32	4-3	15	11	3	2/0	0	50.2	45	29	24	48	37	9	1	3	.249	2	5	0	2	7
Wilson, Haylie	3.95	9-2	21	8	6	0/0	0	78.0	101	53	44	21	40	16	1	9	.314	2	2	0	3	10
Routzon, Stephanie	4.18	3-9	14	13	3	0/0	0	60.1	78	46	36	23	21	15	1	4	.300	0	6	2	0	5
Chastka, Jessica	5.69	0-2	9	0	0	0/0	0	16.0	21	15	13	4	12	4	0	2	.309	2	0	0	1	1
Totals	4.00	16-16	32	32	12	2/0	0	205.0	245	143	117	96	110	44	3	18	.295	6	13	2	6	23
Opponents	3.33	16-16	32	32	17	7/1	1	210.1	210	131	100	89	167	37	6	12	.256	10	13	0	2	20

PB - Team (4), Cassel 4, Opp (11). Pickoffs - Team (0), Opp (1). SBA/ATT - Cassel (32-38), Routzon (10-12), Wilson (10-11), Hamby (9-11), Chastka (3-4).



2012 ULM Softball
Conference statistics for ULM (as of Apr 10, 2012)
(Sun Belt games only Sorted by Batting avg)

Record: 3-9 Home: 2-1 Away: 1-8 Sun Belt: 3-9

Player	avg	gp-gs	ab	r	h	2b	3b	hr	rbi	tb	slg%	bb	hp	so	gdp	ob%	sf	sh	sb-att	po	a	e	fld%
Girardi, Katie	.500	2-1	4	1	2	0	0	1	3	5	1.250	0	0	0	0	.500	0	0	0-0	0	0	0	.000
Salanoa, Janel	.343	12-11	35	5	12	3	0	2	5	21	.600	2	1	3	0	.395	0	0	2-2	73	3	0	1.000
Pastor, Charlotte	.281	12-12	32	3	9	1	0	0	1	10	.313	3	1	1	0	.361	0	1	1-1	2	1	0	1.000
Navarrete, Miyuki	.262	12-12	42	7	11	1	0	1	1	15	.357	1	1	10	0	.295	0	0	8-9	26	17	2	.956
McCall, Haley	.242	12-12	33	4	8	5	0	1	8	16	.485	1	0	10	0	.265	0	1	4-4	15	0	0	1.000
Boening, Kayla	.235	12-12	34	2	8	0	0	0	3	8	.235	3	0	6	0	.297	0	0	2-4	18	18	5	.878
DiMattia, Elena	.216	12-12	37	1	8	0	0	0	2	8	.216	3	0	11	0	.275	0	1	2-4	18	2	2	.909
Cassel, Roxy	.214	12-12	28	3	6	3	0	0	1	9	.321	9	1	8	0	.421	0	0	2-2	35	8	1	.977
Cacioppo, Alexis	.189	12-12	37	4	7	1	0	1	4	11	.297	2	1	5	0	.250	0	0	3-3	10	28	1	.974
Miller, Mackenzie	.148	12-12	27	1	4	1	0	0	1	5	.185	4	0	9	0	.258	0	2	2-2	26	5	0	1.000
Wilson, Haylie	.000	1-0	1	0	0	0	0	0	0	0	.000	0	0	0	0	.000	0	0	0-0	2	3	1	.833
Totals	.242	12	310	31	75	15	0	6	29	108	.348	28	5	63	0	.315	0	5	26-31	227	98	12	.964
Opponents	.299	12	308	58	92	17	1	8	49	135	.438	41	5	33	0	.385	4	4	12-13	246	110	11	.970

LOB - Team (71), Opp (76). DPs turned - Team (5), Opp (3). Picked off - Cacioppo 1.

(Sun Belt games only Sorted by Earned run avg)

Player	era	w-l	app	gs	cg	sho	sv	ip	h	r	er	bb	so	2b	3b	hr	b/avg	wp	hp	bk	sfa	sha
Hamby, Samantha	3.11	1-1	5	4	1	0/0	0	18.0	15	8	8	19	12	5	0	1	.231	1	1	0	0	1
Chastka, Jessica	4.54	0-2	6	0	0	0/0	0	12.1	18	10	8	2	7	2	0	1	.333	2	0	0	1	1
Routzon, Stephanie	5.04	0-5	6	5	1	0/0	0	16.2	24	15	12	11	4	6	0	1	.333	0	3	1	0	1
Wilson, Haylie	5.31	2-1	8	3	2	0/0	0	29.0	35	25	22	9	10	4	1	5	.299	2	1	0	3	1
Totals	4.61	3-9	12	12	4	0/0	0	76.0	92	58	50	41	33	17	1	8	.299	5	5	1	4	4
Opponents	2.39	9-3	12	12	7	3/0	0	82.0	75	31	28	28	63	15	0	6	.242	0	5	0	0	5

PB - Team (2), Cassel 2. Pickoffs - Team (0), Opp (1). SBA/ATT - Cassel (12-13), Routzon (4-4), Hamby (4-4), Chastka (2-3), Wilson (2-2).



ULM Game Highs

BATTING

At bats:	36	at South Alabama (Mar. 10)
Runs scored:	12	vs. Grambling State (Feb. 12)
Hits:	15	vs. Grambling State (Feb. 12)
RBI's:	9	vs. Grambling State (Feb. 12)
Doubles:	3	(4 times)
Triples:	2	vs. Southern (Mar. 4)
Home runs:	2	vs. Wagner (Feb. 25) at FIU (Apr. 6)
Total bases:	21	vs. Southern (Mar. 4)
Walks:	9	vs. Stephen F. Austin (Mar. 7)
Strikeouts:	14	at South Alabama (Mar. 10)
Sac hits:	4	at Charleston (Feb. 25)
Sac flies:	1	vs. IUPUI (Feb. 10) vs. Virginia Tech (Feb. 25)
Stolen bases:	12	vs. Grambling State (Feb. 12)
Hit by pitch:	2	vs. SIU-Edwardsville (Feb. 10)
Caught stealing:	3	at Northwestern State (Mar. 3)
Runners LOB:	13	vs. Stephen F. Austin (Mar. 7)
Hit into DP:	2	vs. IUPUI (Feb.10)

FIELDING

Putouts:	27	vs. SIU-Edwardsville (Feb. 10)
Assists:	14	(4 times)
Errors:	4	vs. SIU-Edwardsville (Feb. 10) vs. Southeast Missouri (Feb. 11)
Passed balls:	1	(4 times)
DPs turned:	1	(13 times)

PITCHING

Innings pitched:	9.0	vs. SIU-Edwardsville (Feb. 10)
Runs allowed:	13	vs. Houston (Feb.19)
Earned runs:	13	vs. Houston (Feb. 19)
Walks allowed:	7	at Samford (Feb. 22) at South Alabama (Mar. 11)\ at FIU (Apr. 6)
Strikeouts:	8	vs. Southeast Missouri (Feb. 11)
Hits allowed:	13	vs. Houston (Feb. 19)
Doubles allowed:	4	at South Alabama (Mar. 11) at Nicholls State (Mar. 28) at FIU (Apr. 6)
Triples allowed:	1	vs. McNeese State (Feb. 18) vs. Stephen F. Austin (Mar. 7) at FIU (Apr. 6)
Homers allowed:	2	vs. IUPUI (Feb.10) vs. Houston (Feb. 19) at Northwestern State (Mar. 4)
Wild pitches:	2	at South Alabama (Mar. 10) at FIU (Apr. 6)
Hit batters:	2	vs. IUPUI (Feb.10) at Middle Tennessee (Mar. 28)

Individual Game Highs

BATTING

At bats:	5	(4 times)
Runs scored:	3	(4 times)
Hits:	3	(8 times)
RBI's:	4	Alexis Cacioppo vs. Grambling State (Feb. 12) Haley McCall vs. Troy (Mar. 15)
Doubles:	1	(37 times)
Triples:	1	(6 times)
Home runs:	1	(12 times)
Total bases:	7	Miyuki Navarrete vs. Southern (Mar. 4)
Walks:	2	(11 times)
Strikeouts:	3	(5 times)
Sac hits:	2	Miyuki Navarrete at Northwestern State (Mar. 4)
Sac flies:	1	Janel Salanoa vs. IUPUI (Feb. 10) Miyuki Navarrete vs. Virginia Tech (Feb. 25)
Stolen bases:	3	Mackenzie Miller at Nicholls State (Mar. 28)
Hit by pitch:	1	(13 times)
Caught stealing:	1	(18 times)
Runners LOB:	4	Kayla Boening vs. Northwestern State (Feb. 11) Mackenzie Miller at Northwestern State (Mar. 4)

FIELDING

Putouts:	14	Janel Salanoa vs. McNeese State (Feb. 18)
Assists:	6	Kayla Boening vs. McNeese State (Feb. 18)
Errors:	2	Kaley McCall vs. Southeast Missouri (Feb. 11)
Passed balls:	1	(4 times)

PITCHING

Innings pitched:	8.0	Stephanie Routzon vs. Virginia Tech (Feb. 25) Stephanie Routzon at South Alabama (Mar. 10) Samantha Hamby vs. Troy (Mar. 14)
Runs allowed:	8	Stephanie Routzon vs. Southeast Missouri (Feb. 11) Stephanie Routzon vs. Houston (Feb. 19)
Earned runs:	8	Stephanie Routzon vs. Houston (Feb. 19)
Walks allowed:	6	Samantha Hamby at Samford (Feb. 22)
Strikeouts:	7	Samantha Hamby vs. Stephen F. Austin (Mar. 7)
Hits allowed:	11	Haylie Wilson at Nicholls State (Mar. 28)
Doubles allowed:	4	Haylie Wilson at Nicholls State (Mar. 28) Samantha Hamby at FIU (Apr. 6)
Triples allowed:	1	Stephanie Routzon vs. McNeese State (Feb. 18) Samantha Hamby vs. Stephen F. Austin Haylie Wilson at FIU (Apr. 6)
Homers allowed:	2	Stephanie Routzon vs. Houston (Feb. 19) Haylie Wilson at Northwestern State (Mar. 4)
Wild Pitches:	1	(6 times)
Hit batters:	2	Stephanie Routzon at Middle Tennessee

TV/Radio Chart



21
Kayla Boening
UT • 5-4 • Fr.
San Antonio, Texas



22
Alexis Cacioppo
IF • 5-5 • Fr.
La Habra, Calif.



13
Roxy Cassel
C/DP • 5-8 • Sr.
Deer Park, Texas



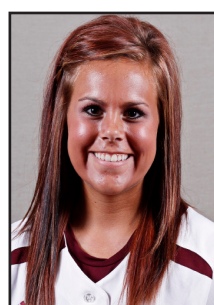
15
Jessica Chastka
P • 5-8 • Sr.
College Station, Texas



3
Elena DiMattia
OF • 5-4 • Jr.
Sunset, La.



24
Katie Girardi
IF/C • 5-8 • Sr.
Pembroke Pines, Fla.



9
Samantha Hamby
P • 5-7 • Jr.
Monroe, La.



18
Haley McCall
IF • 5-6 • Jr.
Grand Chenier, La.



4
Mackenzie Miller
UT • 5-6 • Fr.
Evergreen, Colo.



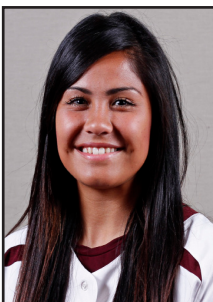
7
Miyuki Navarrete
IF • 5-6 • So.
San Jose, Calif.



10
Charlotte Pastor
IF • 5-3 • Jr.
Metairie, La.



12
Stephanie Routzon
P/IF • 6-0 • So.
Wheat Ridge, Colo.



16
Janel Salanoa
IF • 5-5 • Jr.
San Jose, Calif.



6
Karli Wainwright
OF • 5-4 • Jr.
Lake Charles, La.



14
Haylie Wilson
P • 5-3 • Fr.
Middleburg, Fla.



Head Coach
Rosemary Holloway-Hill